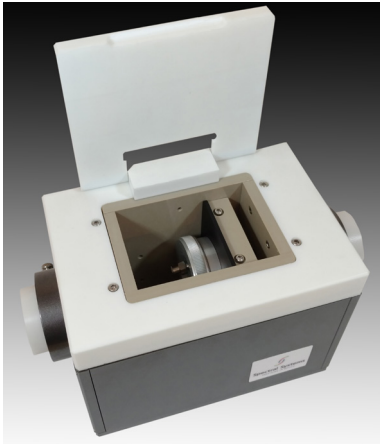


# FLEXITEMP SAMPLING ACCESSORY



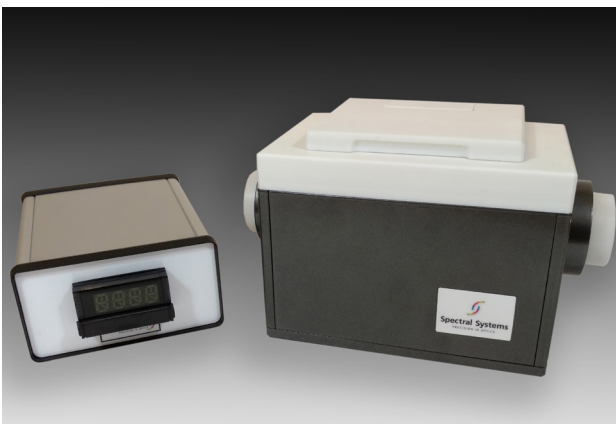
## Temperature Controlled Chamber for Flexible Infrared Sampling

- Heat and or cool samples for transmission IR analysis
- Compatible with liquid and solid samples
- Accessory chamber accepts standard 2" x 3" slide sample holders
- Software temperature control via set point or ramped programs

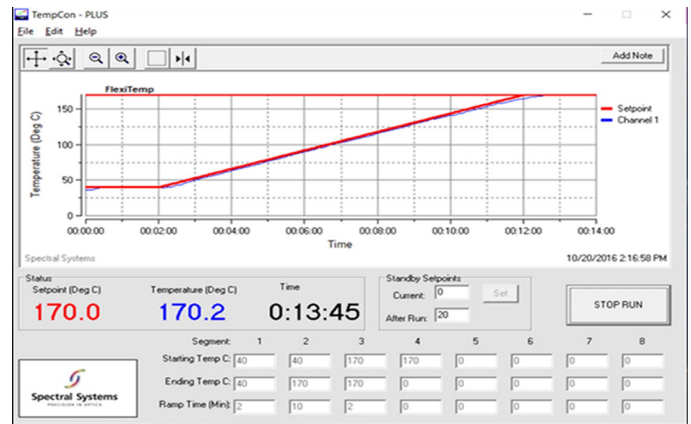
The FlexiTemp™ Sampling Accessory is a new analytical tool for advanced temperature studies in the infrared spectral region. The easily accessible and relatively large sampling chamber is compatible with a variety of sample holders for liquids and solids enabling temperature studies and applications for biotechnology, material and coating performance and polymer industries.

Temperature control for the FlexiTemp Sampling Accessory is provided by fixed set point through TempCon™ Basic software loaded on your PC or via TempCon Plus software for ramped or multi-ramp temperature control.

The FlexiTemp Sampling Accessory is available in Peltier (heating and cooling) and Resistance (heating) versions. The Peltier version for heating and cooling avoids the inconvenience and risks associated with liquid cooled accessories.



**FlexiTemp Sampling Accessory with easy sampling access and real-time temperature display**



**Optional TempCon Plus Software for programed control of HeatIR Sampling Accessory**

## ORDERING INFORMATION

### FlexiTemp Sampling Accessory

DESCRIPTION	PART NO.
FlexiTemp Sampling Accessory, Peltier version	001-9001
FlexiTemp Sampling Accessory, Resistance version	001-9002
TempCon Plus Software	S00-0004

The FlexiTemp Sampling Accessory includes the temperature controller, TempCon Basic software and power cable for your country. Please add xx code selection to our Flexi-Temp Sampling Accessory part number for your FT-IR configuration. Optional TempCon Plus software provides ramped temperature control.

## SPECIFICATIONS

Exterior Accessory Dimensions	6.0" L x 6.2" W x 4.6" H
Interior Chamber Dimensions	4.1" L x 3.0" W x 3.2" H
Accessory Mounting	Standard 2" x 3" Slide Mount
Temperature Controller Dimensions	4" W x 3" H x 8" D
Temperature Range, Peltier Version	-5 to 170°C
Temperature Range, Resistance Version	Ambient to 170°C
Temperature Control	Set Point or Ramped (up to 8 levels with Temp ConPlus software)
Input Voltage	110/220 V, Auto-Switching for World-Wide Operation
Operating Voltage	24 VDC
Temperature Probe	RTD Sensor
Temperature Controller Readout	+/- 0.1 °C

**For other options please contact us**