



Infrared Sampling and Environment Containment

- Highest purity window materials for highest quality infrared spectral data
- Exceptional manufactured finish for highest performance and durability
- Anti-reflective and protective coatings available to maximize throughput and lifetime
- Wedging options available for high resolution measurements

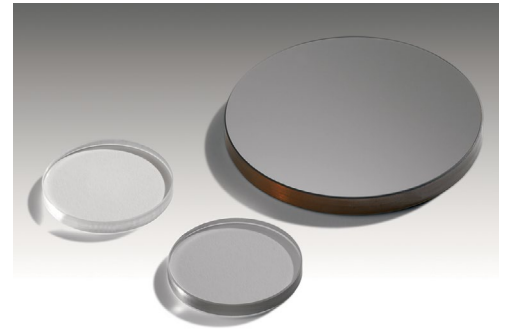
The Spectral Systems Infrared Windows are available in a wide variety of sizes, shapes and materials for measurement and operation in the infrared spectral domain.

All of our windows are manufactured of the highest quality material to provide optimum spectral quality free of stray absorbance bands. All of our windows are manufactured with maximum flatness for precision quantitative analysis and to operate leak free. Window edges are precision beveled to prevent window fracture and optimize a seal for gas or liquid sampling and for vacuum operation.

Our high quality infrared windows are a cost savings for you with reduced material replacement and more efficient measurement success rate.

SPECIFICATIONS

Window Geometry	Disk or rectangular
Window Diameter	+0.0/-0.13 mm
Window Length, Width	±0.13 mm of stated values
Window Thickness	±0.13 mm of stated value
Window Flatness	$\lambda/5$ at 10.6 μm (except KRS-5 and Polyethylene)
Window Edges	Precision beveled



Specialized Coatings

Spectral Systems offer many of their infrared window materials with specialized coatings to improve performance or for special applications. Anti-reflective (AR) coatings can be applied to increase throughput of high refractive index materials. We offer broad band anti-reflective (Spectral Systems XP-BBAR™) and narrow band anti-reflective (Spectral Systems XP-NBAR™) versions. Our proprietary XP-BBAR and XP-NBAR coatings are designed to provide the highest throughput, widest and flat spectral region and exceptional durability with respect to abrasive, environmental and chemical exposures. Our XP-Halide™ or XP-Polymer™ coatings can also be applied to hygroscopic materials to specifically improve their performance in humid environments.

Window Wedging

For some infrared sampling, it may be desirable to use a wedged window to minimize undesirable features in high resolution spectral measurements. Please ask us about your application.





ORDERING INFORMATION – DISKS

Al₂O₃ Disks

DESCRIPTION	PART NO.
13 × 2 mm Disk	910-3016
25 × 2 mm Disk	910-3516

AMTIR Disks

DESCRIPTION	PART NO.
13 × 2 mm Disk	930-3016
25 × 2 mm Disk	930-3516
32 × 3 mm Disk	930-3716
32 × 3 mm Drilled Disk	930-3717

BaF₂ Disks

DESCRIPTION	PART NO.
13 × 2 mm Disk	915-3016
13 × 2 mm, 4 Pack	915-6013
15 × 2 mm Disk	915-3116
19 × 2 mm Disk	915-3216
20 × 2 mm Disk	915-3316
25 × 2 mm Disk	915-3516
25 × 2 mm, 4 Pack	915-6025
25 × 4 mm Disk	915-3616
32 × 3 mm Disk	915-3716
32 × 3 mm, 4 Pack	915-6032
32 × 3 mm Drilled Disk	915-3717
32 × 3 mm Drilled, 4 Pack	915-6033
38 × 3 mm Disk	915-3815
38 × 6 mm Disk	915-3816
41 × 3 mm Disk	915-3916
49 × 6 mm Disk	915-4016
50 × 3 mm Disk	915-4116

CaF₂ Disks

DESCRIPTION	PART NO.
13 × 2 mm Disk	920-3016
13 × 2 mm, 4 Pack	920-6013
19 × 2 mm Disk	920-3216
20 × 2 mm Disk	920-3316
22 × 4 mm Disk	920-3416
25 × 2 mm Disk	920-3516
25 × 2 mm, 4 Pack	920-6025
25 × 4 mm Disk	920-3616
25 × 5 mm Disk	920-3618
32 × 3 mm Disk	920-3716
32 × 3 mm, 4 Pack	920-6032
32 × 3 mm Drilled Disk	920-3717
32 × 3 mm Drilled, 4 Pack	920-6033
38 × 3 mm Disk	920-3815
38 × 6 mm Disk	920-3816
41 × 3 mm Disk	920-3916
44 × 3 mm Disk	920-4403
49 × 6 mm Disk	920-4016
50 × 3 mm Disk	920-4116

CdTe Disks

DESCRIPTION	PART NO.
12 × 1 mm Disk	925-1201
25 × 2 mm Disk	925-3516
38 × 2 mm Disk	925-3814
50 × 3 mm Disk	925-4116

CsI Disks

DESCRIPTION	PART NO.
13 × 2 mm Disk	935-3016
25 × 2 mm Disk	935-3516
32 × 3 mm Disk	935-3716

Ge Disks

DESCRIPTION	PART NO.
13 × 2 mm Disk	940-3016
19 × 2 mm Disk	940-3216
20 × 2 mm Disk	940-3316
25 × 2 mm Disk	940-3516
25 × 4 mm Disk	940-3616
32 × 3 mm Disk	940-3716
32 × 3 mm Drilled Disk	940-3717
38 × 3 mm Disk	940-3815
41 × 3 mm Disk	940-3916
50 × 3 mm Disk	940-4116

Ge Disks, XP-BBAR Coated (2–14 micron)

DESCRIPTION	PART NO.
13 × 2 mm Disk	940-3016C
19 × 2 mm Disk	940-3216C
20 × 2 mm Disk	940-3316C
25 × 1 mm Disk	940-3515C
25 × 2 mm Disk	940-3516C
25 × 4 mm Disk	940-3616C
32 × 3 mm Disk	940-3716C
32 × 3 mm Drilled Disk	940-3717C
38 × 3 mm Disk	940-3815C
41 × 3 mm Disk	940-3916C
50 × 3 mm Disk	940-4116C

Ge Disks, XP-NBAR Coated (8–12 micron)

DESCRIPTION	PART NO.
13 × 2 mm Disk	940-3016D
19 × 2 mm Disk	940-3216D
20 × 2 mm Disk	940-3316D
25 × 1 mm Disk	940-3515D
25 × 2 mm Disk	940-3516D
25 × 4 mm Disk	940-3616D
32 × 3 mm Disk	940-3716D
32 × 3 mm Drilled Disk	940-3717D
38 × 3 mm Disk	940-3815D
41 × 3 mm Disk	940-3916D
50 × 3 mm Disk	940-4116D

IR Quartz Disks

DESCRIPTION	PART NO.
32 × 3 mm Disk	965-3716
32 × 3 mm Drilled Disk	965-3717

KBr Disks

DESCRIPTION	PART NO.
6 × 1.5 mm Disk	945-2750
13 × 1 mm Disk	945-3015
13 × 2 mm Disk	945-3016
13 × 2 mm, 6 Pack	945-6013
18 × 1.5 mm Disk	945-3215
19 × 2 mm Disk	945-3216
20 × 2 mm Disk	945-3316
22 × 4 mm Disk	945-3416
25 × 2 mm Disk	945-3516
25 × 4 mm Disk	945-3616
25 × 4 mm, 6 Pack	945-6025
25 × 5 mm Disk	945-3618
30 × 4 mm Disk	945-3700
32 × 3 mm Disk	945-3716
32 × 3 mm, 6 Pack	945-6032
32 × 3 mm Drilled Disk	945-3717
32 × 3 mm Drilled, 6 Pack	945-6033
38 × 3 mm Disk	945-3815
38 × 6 mm Disk	945-3816
44 × 3 mm Disk	945-4403
49 × 6 mm Disk	945-4016
50 × 3 mm Disk	945-4116

KBr Disks, XP-Halide Coated for Humidity Protection

DESCRIPTION	PART NO.
6 × 1.5 mm Disk	945-2750C
13 × 1 mm Disk	945-3015C
13 × 2 mm Disk	945-3016C
18 × 1.5 mm Disk	945-3215C
19 × 2 mm Disk	945-3216C
20 × 2 mm Disk	945-3316C
22 × 4 mm Disk	945-3416C
25 × 2 mm Disk	945-3516C
25 × 4 mm Disk	945-3616C
25 × 5 mm Disk	945-3618C
30 × 4 mm Disk	945-3700C
32 × 3 mm Disk	945-3716C
32 × 3 mm Drilled Disk	945-3717C
38 × 3 mm Disk	945-3815C
38 × 6 mm Disk	945-3816C
44 × 3 mm Disk	945-4403C
49 × 6 mm Disk	945-4016C
50 × 3 mm Disk	945-4116C

KBr Disks, XP-Polymer Coated for Humidity Protection

DESCRIPTION	PART NO.
6 × 1.5 mm Disk	945-2750P
13 × 1 mm Disk	945-3015P
13 × 2 mm Disk	945-3016P
18 × 1.5 mm Disk	945-3215P
19 × 2 mm Disk	945-3216P
20 × 2 mm Disk	945-3316P
22 × 4 mm Disk	945-3416P
25 × 2 mm Disk	945-3516P
25 × 4 mm Disk	945-3616P
25 × 5 mm Disk	945-3618P
30 × 4 mm Disk	945-3700P
32 × 3 mm Disk	945-3716P
32 × 3 mm Drilled Disk	945-3717P
38 × 3 mm Disk	945-3815P
38 × 6 mm Disk	945-3816P
44 × 3 mm Disk	945-4403P
49 × 6 mm Disk	945-4016P
50 × 3 mm Disk	945-4116P

KBr Disks, Wedged

DESCRIPTION	PART NO.
7 × 0.9 mm Disk	945-0705W
19 × 2 mm Disk	945-3216W
25 × 4 mm Disk	945-3616W
32 × 3 mm Drilled Disk	945-3717W
32 × 3 mm Disk	945-3716W
34 × 3 mm Disk	945-3773W
41 × 3 mm Disk	945-3916W
45 × 3 mm Disk	945-3951W
56,74 × 6.35 mm Disk	945-5674W

KRS-5 Disks

DESCRIPTION	PART NO.
32 × 3 mm Disk	950-3716
32 × 3 mm Drilled Disk	950-3717

NaCl Disks

DESCRIPTION	PART NO.
13 × 2 mm Disk	955-3016
13 × 2 mm, 6 Pack	955-6013
19 × 2 mm Disk	955-3216
20 × 2 mm Disk	955-3316
25 × 2 mm Disk	955-3516
25 × 4 mm Disk	955-3616
25 × 4 mm, 6 Pack	955-6025
25 × 5 mm Disk	955-3618
32 × 3 mm Disk	955-3716
32 × 3 mm, 6 Pack	955-6032
32 × 3 mm Drilled Disk	955-3717
32 × 3 mm Drilled, 6 Pack	955-6033
38 × 6 mm Disk	955-3816
41 × 3 mm Disk	955-3916
49 × 6 mm Disk	955-4016
50 × 3 mm Disk	955-4116

For options not shown here, please contact Spectral Systems.

NaCl Disks, XP-Halide Coated for Humidity Protection

DESCRIPTION	PART NO.
13 × 2 mm Disk	955-3016C
19 × 2 mm Disk	955-3216C
20 × 2 mm Disk	955-3316C
25 × 2 mm Disk	955-3516C
25 × 4 mm Disk	955-3616C
25 × 5 mm Disk	955-3618C
32 × 3 mm Disk	955-3716C
32 × 3 mm Drilled Disk	955-3717C
38 × 6 mm Disk	955-3816C
41 × 3 mm Disk	955-3916C
49 × 6 mm Disk	955-4016C
50 × 3 mm Disk	955-4116C

NaCl Disks, XP-Polymer Coated for Humidity Protection

DESCRIPTION	PART NO.
13 × 2 mm Disk	955-3016P
19 × 2 mm Disk	955-3216P
20 × 2 mm Disk	955-3316P
25 × 2 mm Disk	955-3516P
25 × 4 mm Disk	955-3616P
25 × 5 mm Disk	955-3618P
32 × 3 mm Disk	955-3716P
32 × 3 mm Drilled Disk	955-3717P
38 × 6 mm Disk	955-3816P
41 × 3 mm Disk	955-3916P
49 × 6 mm Disk	955-4016P
50 × 3 mm Disk	955-4116P

Polyethylene Disks

DESCRIPTION	PART NO.
32 × 3 mm Disk	957-3716
32 × 3 mm Drilled Disk	957-3717

Si Disks

DESCRIPTION	PART NO.
13 × 2 mm Disk	960-3016
32 × 3 mm Disk	960-3716
32 × 3 mm Drilled Disk	960-3717
38 × 6 mm Disk	960-3816

ZnS Disks

DESCRIPTION	PART NO.
13 × 2 mm Disk	971-3016
20 × 2 mm Disk	971-3316
25 × 2 mm Disk	971-3516
32 × 3 mm Disk	971-3716
32 × 3 mm Drilled Disk	971-3717
38 × 3 mm Disk	971-3816
41 × 3 mm Disk	971-3916
49 × 3 mm Disk	971-4016
50 × 3 mm Disk	971-4116

ZnSe Disks

DESCRIPTION	PART NO.
13 × 2 mm Disk	975-3016
13 × 2 mm, 3 Pack	975-6025
19 × 2 mm Disk	975-3216
20 × 2 mm Disk	975-3316
22 × 2 mm Disk	975-3416
25 × 2 mm Disk	975-3516
25 × 2 mm, 3 Pack	975-6025
25 × 4 mm Disk	975-3616
25 × 5 mm Disk	975-3618
32 × 3 mm Disk	975-3716
32 × 3 mm, 3 Pack	975-6032
32 × 3 mm Drilled Disk	975-3717
32 × 3 mm Drilled, 3 Pack	975-6033
38 × 3 mm Disk	975-3816
41 × 3 mm Disk	975-3916
49 × 3 mm Disk	975-4016
50 × 3 mm Disk	975-4116

ZnSe Disks, XP-BBAR Coated (2-14 micron)

DESCRIPTION	PART NO.
13 × 2 mm Disk	975-3016C
19 × 2 mm Disk	975-3216C
20 × 2 mm Disk	975-3316C
22 × 2 mm Disk	975-3416C
25 × 2 mm Disk	975-3516C
25 × 4 mm Disk	975-3617C
25 × 5 mm Disk	975-3618C
32 × 3 mm Disk	975-3716C
32 × 3 mm Drilled Disk	975-3717C
38 × 3 mm Disk	975-3816C
41 × 3 mm Disk	975-3916C
49 × 3 mm Disk	975-4016C
50 × 3 mm Disk	975-4116C

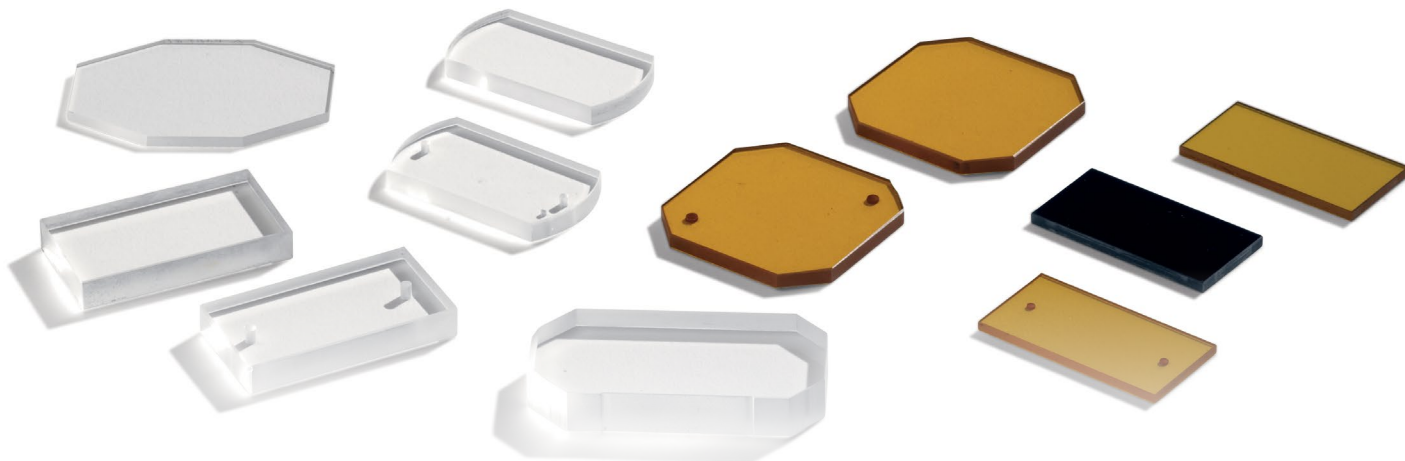
ZnSe Disks, Wedged, XP-BBAR Coated (2-14 micron)

DESCRIPTION	PART NO.
25 × 2 mm W20 mrad Disk	975-3519C
45 × 3 W6 mrad Disk	975-3920C

ZnSe Disks, XP-NBAR Coated (8-12 micron)

DESCRIPTION	PART NO.
13 × 2 mm Disk	975-3016D
19 × 2 mm Disk	975-3216D
20 × 2 mm Disk	975-3316D
22 × 2 mm Disk	975-3416D
25 × 2 mm Disk	975-3516D
25 × 4 mm Disk	975-3617D
25 × 5 mm Disk	975-3618D
32 × 3 mm Disk	975-3716D
32 × 3 mm Drilled Disk	975-3717D
38 × 3 mm Disk	975-3816D
41 × 3 mm Disk	975-3916D
49 × 3 mm Disk	975-4016D
50 × 3 mm Disk	975-4116D

For options not shown here, please contact Spectral Systems.



ORDERING INFORMATION – RECTANGLES

BaF₂ Rectangles

DESCRIPTION	PART NO.
30 × 15 × 4 mm Rectangle	915-5226
30 × 15 × 4 mm Drilled Rectangle	915-5227
38 × 19 × 4 mm Rectangle	915-5326
38 × 19 × 4 mm Drilled Rectangle	915-5328

CaF₂ Rectangles

DESCRIPTION	PART NO.
25 × 12 × 2 mm Rectangle	920-5026
30 × 15 × 4 mm Rectangle	920-5226
30 × 15 × 4 mm Drilled Rectangle	920-5227
38 × 19 × 4 mm Rectangle	920-5326
38 × 19 × 4 mm Drilled Rectangle	920-5328

Ge Rectangles

DESCRIPTION	PART NO.
30 × 15 × 4 mm Rectangle	940-5226
30 × 15 × 4 mm Drilled Rectangle	940-5227
38 × 19 × 4 mm Rectangle	940-5326
38 × 19 × 4 mm Drilled Rectangle	940-5328

KBr Rectangles

DESCRIPTION	PART NO.
25 × 25 × 4 mm Rectangle	945-5126
30 × 15 × 4 mm Rectangle	945-5226
30 × 15 × 4 mm Drilled Rectangle	945-5227
38 × 19 × 4 mm Rectangle	945-5326
38 × 19 × 4 mm Drilled Rectangle	945-5328

KBr Rectangles, XP-Halide Coated for Humidity Protection

DESCRIPTION	PART NO.
25 × 25 × 4 mm Rectangle	945-5126C
30 × 15 × 4 mm Rectangle	945-5226C
30 × 15 × 4 mm Drilled Rectangle	945-5227C
38 × 19 × 4 mm Rectangle	945-5326C
38 × 19 × 4 mm Drilled Rectangle	945-5328C

KBr Rectangles, XP-Polymer Coated for Humidity Protection

DESCRIPTION	PART NO.
25 × 25 × 4 mm Rectangle	945-5126P
30 × 15 × 4 mm Rectangle	945-5226P
30 × 15 × 4 mm Drilled Rectangle	945-5227P
38 × 19 × 4 mm Rectangle	945-5326P
38 × 19 × 4 mm Drilled Rectangle	945-5328P

NaCl Rectangles

DESCRIPTION	PART NO.
25 × 12 × 2 mm Rectangle	955-5026
30 × 15 × 4 mm Rectangle	955-5226
30 × 15 × 4 mm Drilled Rectangle	955-5227
38 × 19 × 4 mm Rectangle	955-5326
38 × 19 × 4 mm Drilled Rectangle	955-5328
41 × 23 × 6 mm Rectangle	955-5426

NaCl Rectangles, XP-Halide Coated for Humidity Protection

DESCRIPTION	PART NO.
25 × 12 × 2 mm Rectangle	955-5026C
30 × 15 × 4 mm Rectangle	955-5226C
30 × 15 × 4 mm Drilled Rectangle	955-5227C
38 × 19 × 4 mm Rectangle	955-5326C
38 × 19 × 4 mm Drilled Rectangle	955-5328C
41 × 23 × 6 mm Rectangle	955-5426C

NaCl Rectangles, XP-Polymer Coated for Humidity Protection

DESCRIPTION	PART NO.
25 × 12 × 2 mm Rectangle	955-5026P
30 × 15 × 4 mm Rectangle	955-5226P
30 × 15 × 4 mm Drilled Rectangle	955-5227P
38 × 19 × 4 mm Rectangle	955-5326P
38 × 19 × 4 mm Drilled Rectangle	955-5328P
41 × 23 × 6 mm Rectangle	955-5426P

ZnSe Rectangles

DESCRIPTION	PART NO.
30 × 15 × 2 mm Rectangle	975-5226
30 × 15 × 2 mm Drilled Rectangle	975-5227
38 × 19 × 2 mm Rectangle	975-5326
38 × 19 × 2 mm Drilled Rectangle	975-5328

For options not shown here, please contact Spectral Systems.